

## What's new at the farm

### Meet Hayley Madden, ORI's 2023 Field Technician



Hayley Madden grew up surrounded by the Coast Mountains around Vancouver, BC, where she first fell in love with exploring the outdoors. She is excited to learn about the owls of Montana and develop her skills in wildlife research!

Learn more about Hayley:

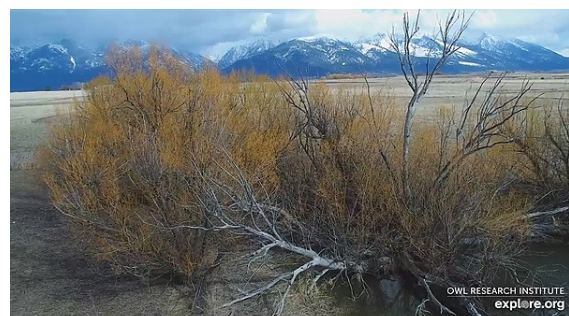
[Meet Hayley Madden, ORI's 2023 Field Technician!](#)

Hayley is already an incredible asset, and we're glad to have her with us here in Montana this season!

### New live cam

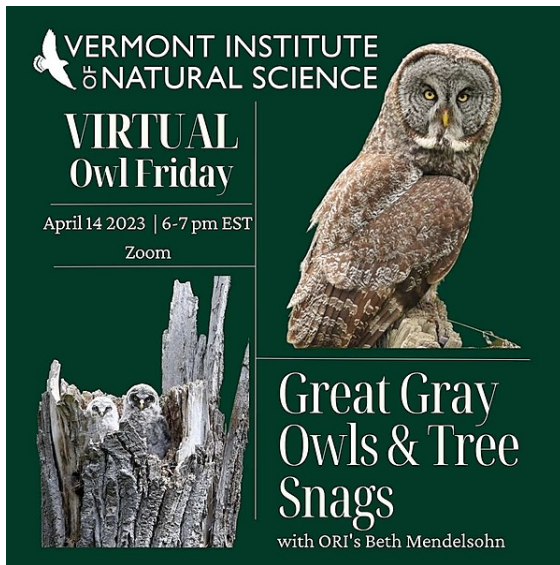
We have a new live camera at the ORI farm! This cam will feature 24/7 views of the pond behind our workshop.

The trees by the pond are favorite perches for many raptors, including our resident Great Horned Owls.



Check out the cam here: [ORI Farm Roost Camera](#)

## Upcoming Events

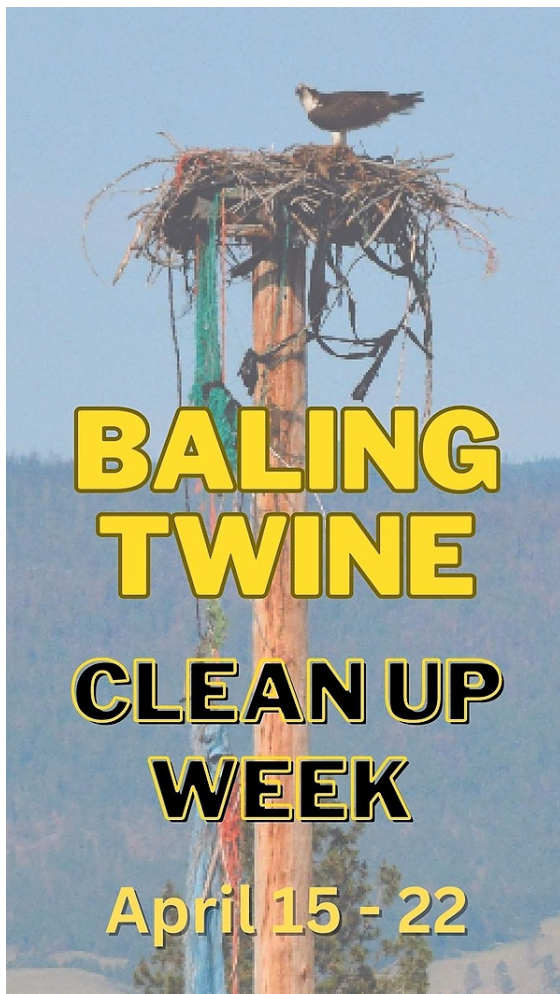


### April 14

Join ORI and the Vermont Institute of Natural Science at 6 pm EST this Friday for **Virtual Owl Friday: Great Gray Owls & Tree Snags with Beth Mendelsohn**

Free Zoom presentation, but registration is required. For more information and to register:

[Great Gray Owls & Tree Snags](#)



### April 15 - 22

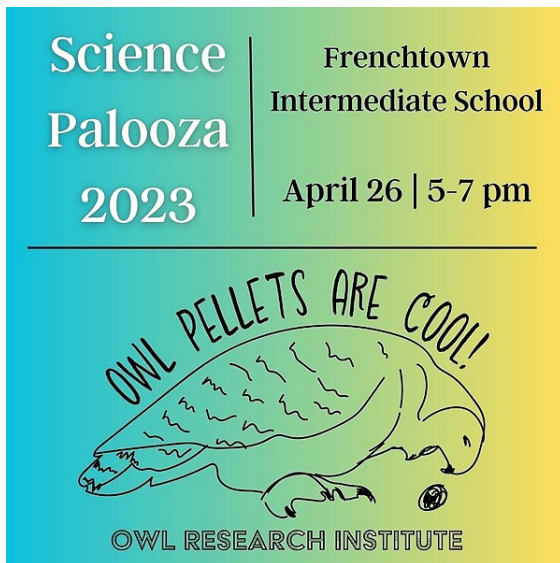
#### **Baling Twine Clean Up Week**

Join ORI in picking up and properly disposing of baling twine! Drop used baling twine at ORI's headquarters in Charlo (35490 Ninepipe Ln) or CSKT wildlife offices in Polson (408 6th Ave E) anytime from April 15-22.

Not in the Mission Valley but still want to participate? Pick up any litter that might pose a threat to nesting birds (like baling twine, fishing line, or any trash!) and properly dispose of it. Take a picture, share it on social media and tag ORI.

Everyone who tags ORI will be entered into a drawing for fun prizes!

Celebrate Earth Week and help protect Osprey & other wildlife! [Learn more about the dangers of baling twine for](#)



## **April 26**

Join Lauren at **Science Palooza 2023** at [Frenchtown Intermediate School](#) (in Frenchtown, MT)

This family-friendly event features all sorts of fun science activities- stop by ORI's table for some hands-on time with owl pellets & a closer look at cool owl adaptations!

5 to 7:30 pm MST

---

## **Barred Owls in Montana**



This year, ORI is helping support University of Montana Environmental Studies graduate student Adam Potts with his master's thesis, studying Barred Owls in Montana. His research focuses on their habitat preferences, and he is currently searching for territories and nesting sites.

Read more about Adam's research: [Barred Owls in Montana with UM grad student Adam Potts](#)

---

## **Live Cam Highlights**



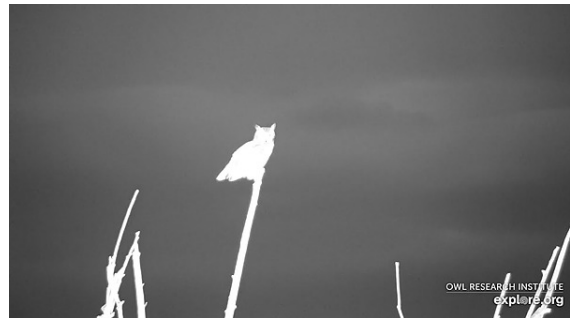
Canada Geese have yet again taken over one of the Osprey platforms. So far there are 6 eggs in the nest!  
 Watch it live: [Osprey – Canada Goose at Rogers Place](#)



Can you spot the Long-eared Owl hidden among the branches?  
 Watch it live: [Long-eared Owl Nest Winter Roost](#)



Now that the ice is melted, our Mission Mountain Views include sunning turtles and swimming geese!  
 Watch it live: [Mission Mountain Range](#)



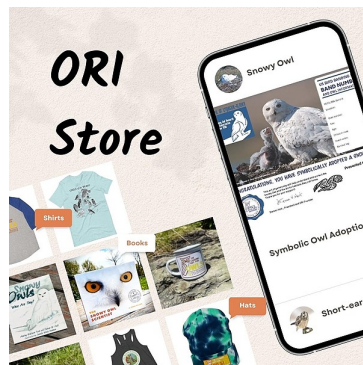
Whooo goes there at night at ORI headquarters? One of our resident Great Horned Owls!  
 Watch it live: [ORI Farm Roost Camera](#)

## Ways To Support ORI



Support long-term research, conservation, & education.

[DONATE](#)



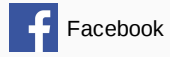
One-of-a-kind t-shirts, mugs, books, tote bags, hats, and more!

[ORI STORE](#)



Symbolically adopt an owl, and give the gift of owl conservation.

[SYMBOLIC ADOPTIONS](#)



Copyright © 2022 Owl Research Institute, All rights reserved.

**Our mailing address is:**

PO Box 39 | Charlo, MT | 59824

Want to change how you receive these emails?  
You can [unsubscribe from this list](#).